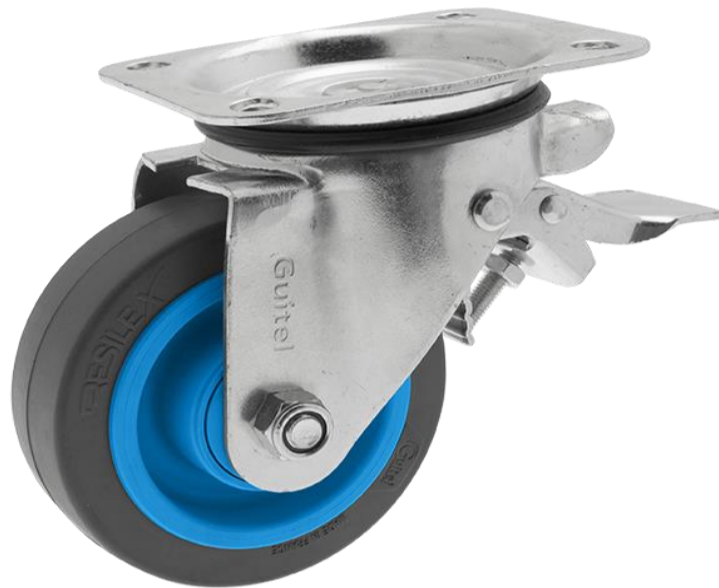


# Data Sheet

## Maxiroll Resilex Castor Ø125 Swivelling plate with brake

Code Article 74252  
Code EAN 13 3 14723 074252 6



### Mounting:

Swivelling in steel plate pressed, pivoting on 2 ball-bearing races, protection of the upper crown by a black plastic dust cap, double effect brake with steel pedal  
thickness of the plate: 3 mm,  
thickness of the cap : 3 mm,  
protective white zinc coating.

### Wheel:

Wheel body in Pantone 298c color polyamide, Ral 7011 color tread in non-marking elastic rubber dipped on the body, waterproof precision ball-bearing equipped of polyamide thread guard.

### Technical datas

Wheel Ø	125 mm
Castor height	161 mm
Bore type	ball bearing
Hub length	60 mm
Type of axis	Bolt + nut
Outer dimension of the plate	135 x 110 mm
Center-to-center distance of the bolt holes of the mounting plate	105 x 80 mm
Mounting bolt holes Ø	Oblong Ø12 mm
Castor offset	52 mm
Radius of gyration	115 mm
Tread width	40 mm
Tyre hardness	68 shore A
Maximum load	300 daN
Operating temperature	-40 à + 85 ° C
Castor weight	2,14 kg
Standard	NF EN 12532